

Disturbance Capture, available for both VMS and Windows SCADA, allows the user to analyze the entire state of the system leading up to, and after a disturbance. All changes in analog and status points system-wide are recorded when a user defined disturbance is detected.

Features:

Users can define the pre- and post-disturbance duration and sampling rates.

The pre-disturbance duration can be set from 1 to 15 minutes, with a sampling rate of 15 seconds to 15 minutes.

The post-disturbance duration can be set from 1 to 15 minutes, with a sampling rate of 5 seconds to 15 minutes.

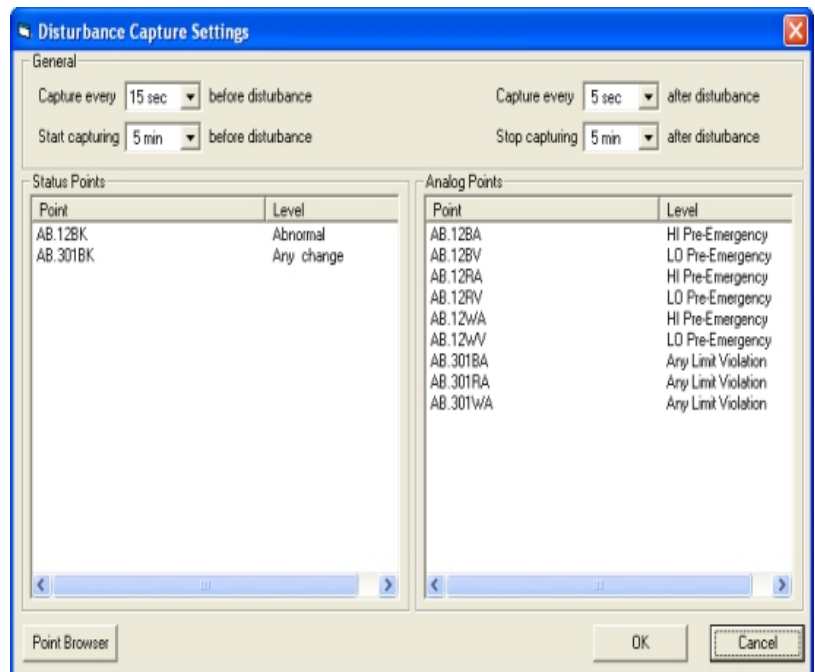
The Disturbance Capture editor allows the user to specify which points can trigger disturbance captures, and for each point, what would signal a disturbance. Points can be dragged-and-dropped into the disturbance capture settings box, and right-clicked to set the state or limit.

Status can trigger a disturbance capture for a change of state:

- Abnormal
- Open
- Closed
- Any change

Analog points can trigger a disturbance capture for any limit violation:

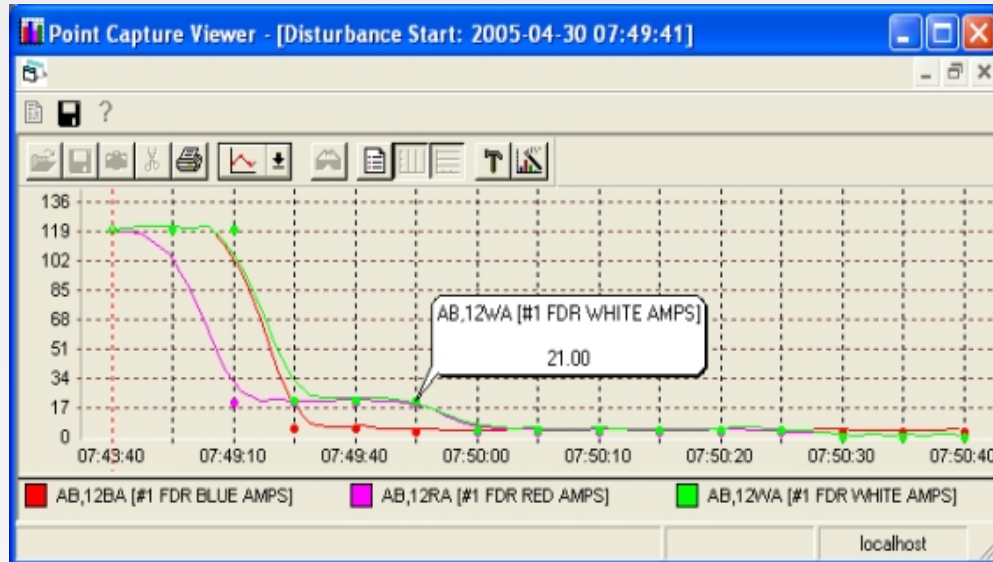
- Low Pre-Emergency
- High Pre-Emergency
- Low or High Pre-Emergency
- Low Emergency
- High Emergency
- Low or High Emergency
- Low Unreasonable
- High Unreasonable
- Low or High Unreasonable
- Any Limit Violation



Disturbance Capture keeps a log of all disturbances, detailing the date and time of the disturbance, the point that triggered the disturbance, the reason code, and the recorded length pre- and post-disturbance.

There is no limit (other than that imposed by disk space) on the number of disturbance capture files that can be accumulated.

Disturbance Capture includes the Point Capture Viewer, which allows users to analyze points from anywhere in the system, for a given disturbance. The Point Capture Viewer also allows the user to select any disturbance file and export it to Microsoft Excel for further analysis.



Benefits:

- Allows the user to analyze the entire state of the system leading up to, and after a disturbance
- Records all changes in analog and status points system-wide
- Define pre- and post-disturbance duration and sampling rates
- Specify which points can trigger disturbance captures, and for each point, what would signal a disturbance
- Includes Point Capture Viewer to analyze points from anywhere in the system
- Export any disturbance file to Microsoft Excel for further analysis

2600 Argentia Road • Mississauga, Ontario • L5N 5V4, Canada
www.survalent.com • 905.826.5000 • sales@survalent.com