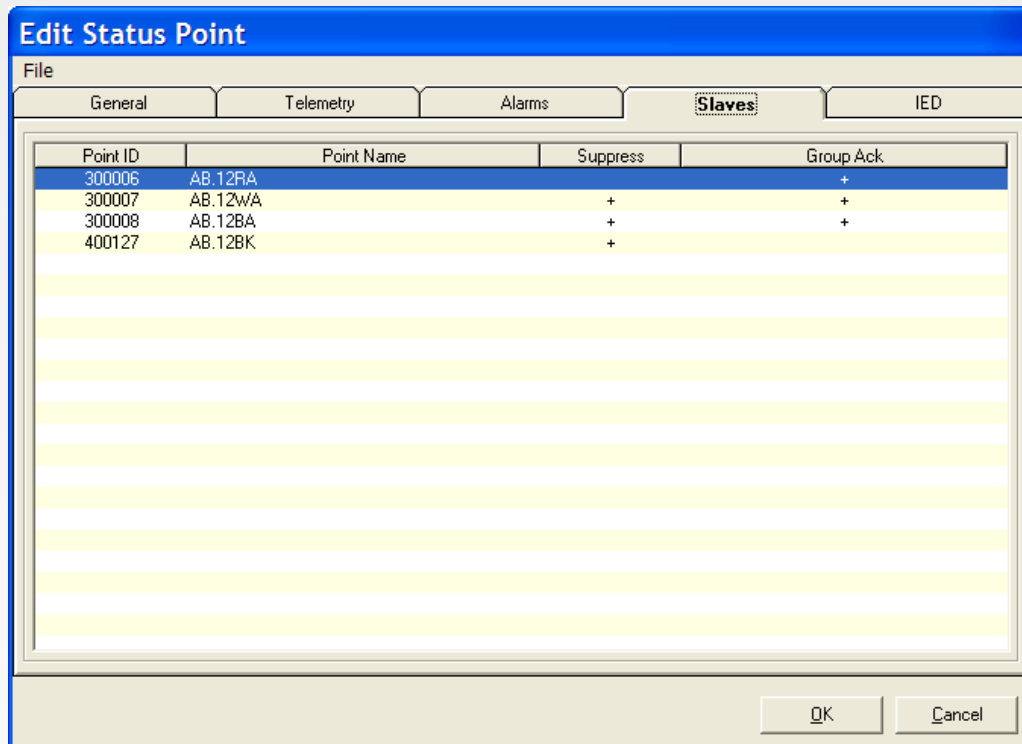


Master/Slave Alarm Suppression

Master/Slave Alarm allows alarms to be filtered so only the real cause of the problem is presented on the alarm display. It allows the user to define a hierarchy of primary and secondary (master/slave) alarm point relationships. These relationships may be used for Alarm Suppression, and for Group Acknowledgement.



If the alarm suppression function is enabled for a particular master/slave relationship, then as long as the master point is in the alarm state, alarms on its slave points are suppressed (i.e. the alarm severity is reduced to zero). The suppression may be specified to be either time-limited or indefinite.

If the group acknowledgement function is enabled for a particular master/slave relationship, then whenever an alarm is acknowledged on the master point, its slaves are acknowledged as well.

Each master can have any number of slaves, each slave can have any number of masters, and a slave can also be a master and have slaves of its own.