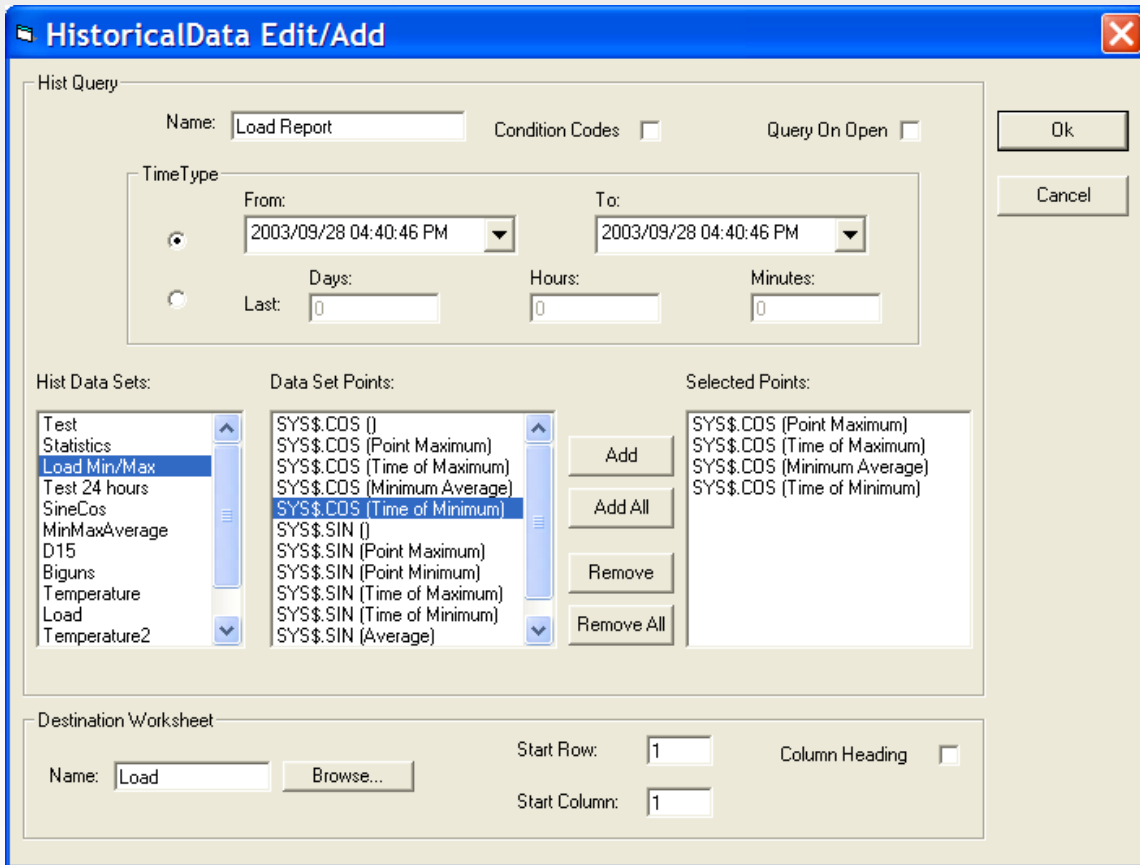


SCADA Add-In (for Microsoft Excel and Access) allows a graphic interface from the application to SCADA database information. Once installed, a SCADA menu shows on the pull down menus bar within MS Excel and MS Access.



This application makes for a quick and efficient interface between MS Excel and Access and the SCADA information, so reports, graphs, and queries can be easily created. Current point data (status and control) as well as Historical information are available through the SCADA Add-In application.

Connecting to the SCADA/HMI system requires the host name and a SCADA account and password, so only authorized users gain access to this information.

SCADA Add-In can be invoked by opening a spreadsheet directly or by launching the spreadsheet from WorldView, so a report could be automatically created just by clicking on a poke point within the Graphical User Interface.