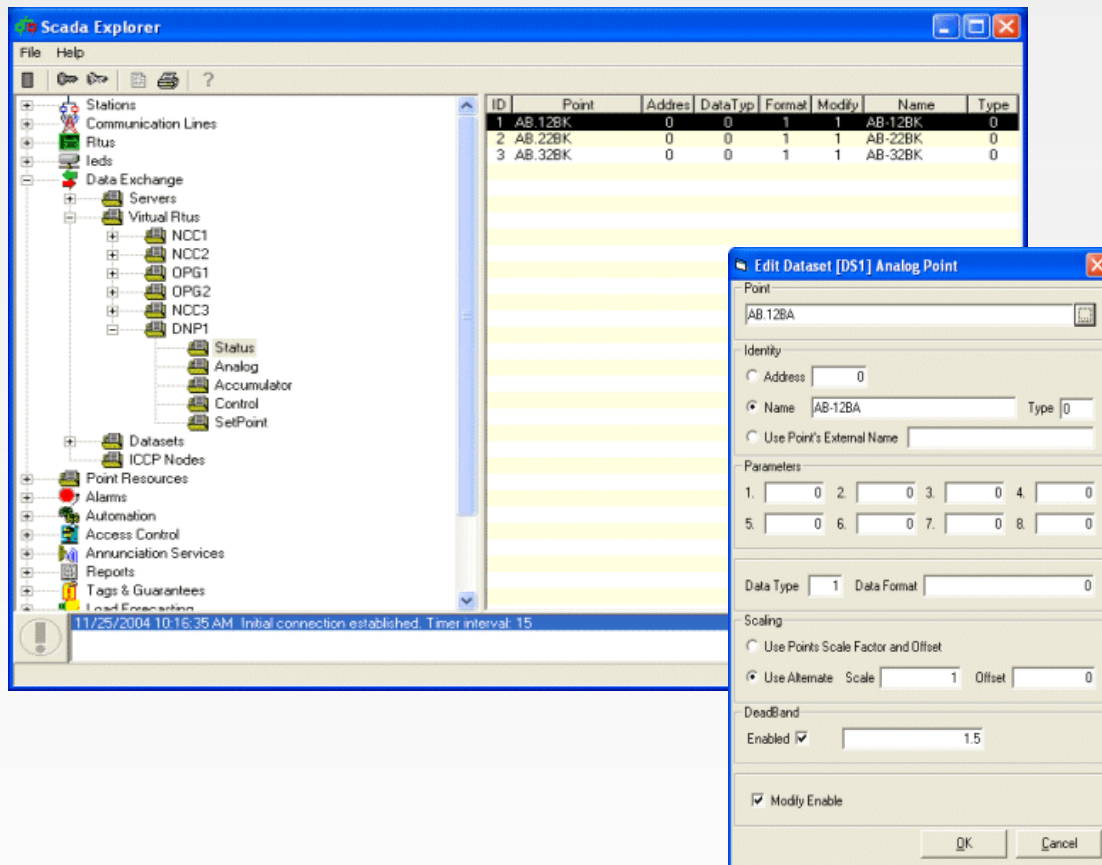


Virtual RTU application allows for quick and easy setup of a virtual device that can be polled by another master station via DNP3.0 or Modbus protocol. This is a great alternative to ICCP for sharing data between two SCADA master stations.



Points are easily added to the Virtual RTU with the Drag-n-Drop Point Browser. Virtual RTU includes all the editors for setting up the communication connection and how the data is formatted when polled by the other system.

Complete Datasets can be created and assigned to multiple Virtual RTUs. This means that the same data can easily be sent to more than one master system without having to maintain duplicate dataset definitions for each Virtual RTU.